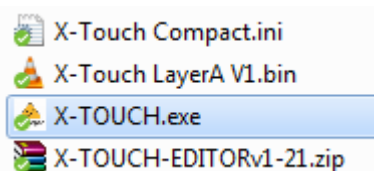
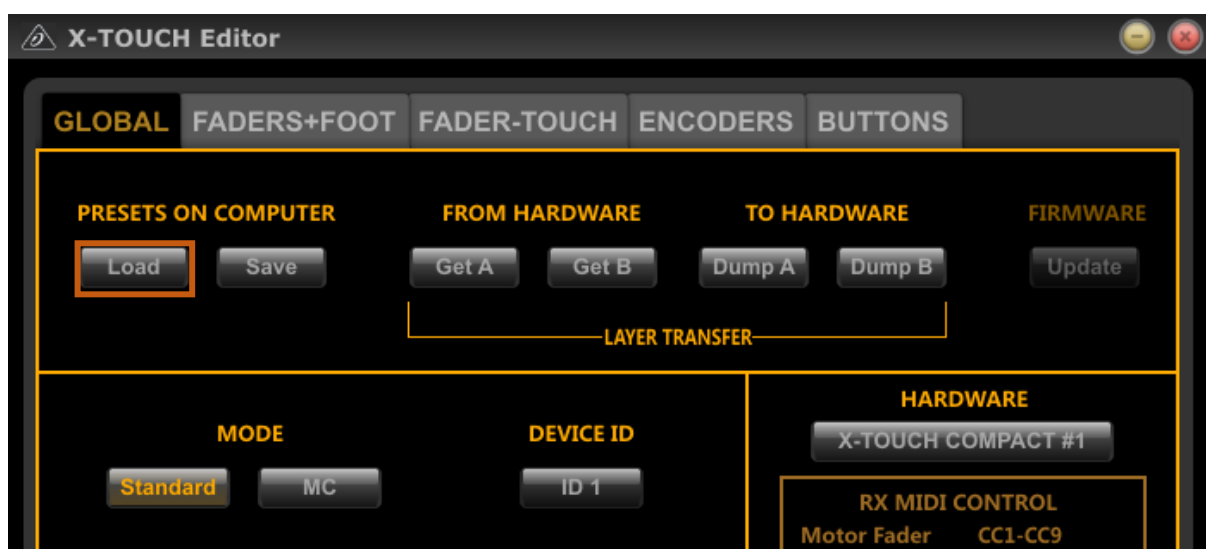


## MIDI BEHRINGER X-TOUCH CONTROLLER INSTALLATION GUIDE

- Once downloaded, unzip the folder.
- You'll find all the files you need to install/set up the Behringer X-Touch consoles.



- **Connect the console to the PC**
- Let Windows connected to the Internet detect and install drivers
- Install and launch the publisher X-Touch.exe

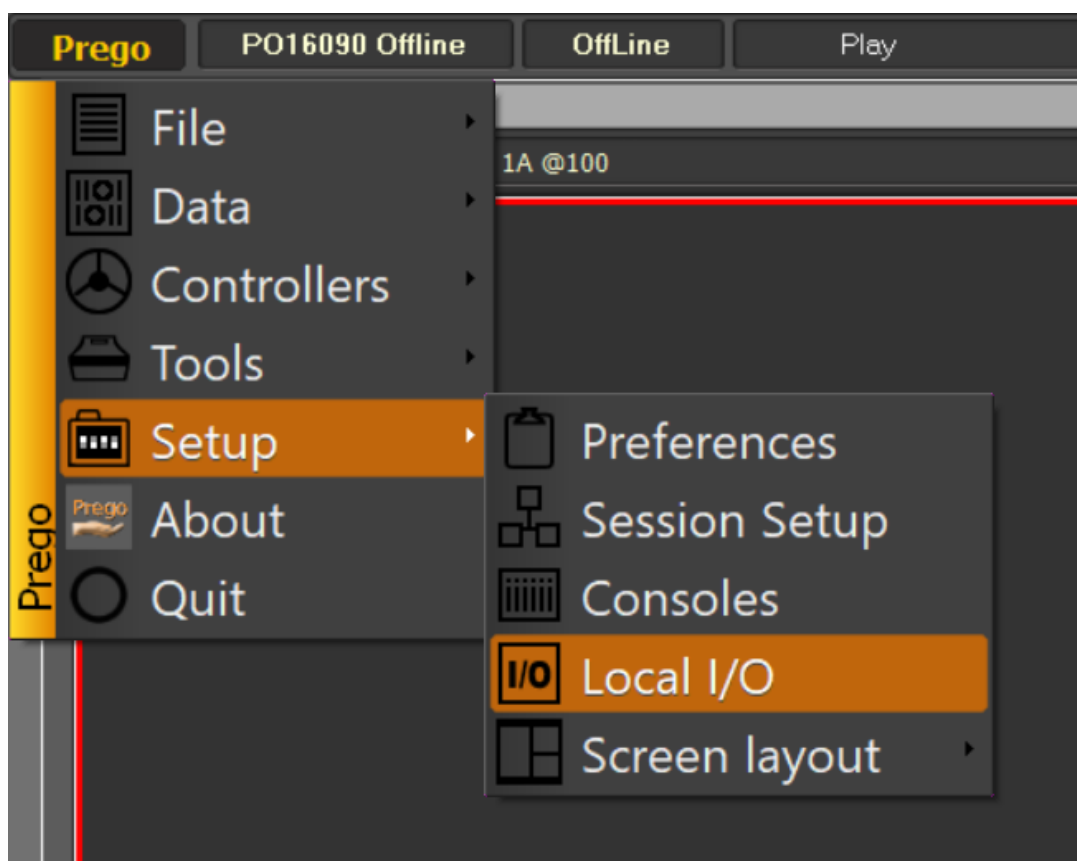


- LOAD then navigate to the location where you unzipped the X-TouchTouchfiles.
- Open the X-Touch LayerA V1.bin file, which loads the layout into the program.
- To send it now to the console, click ON DUMP A, which sets up the layout A buttons and faders:

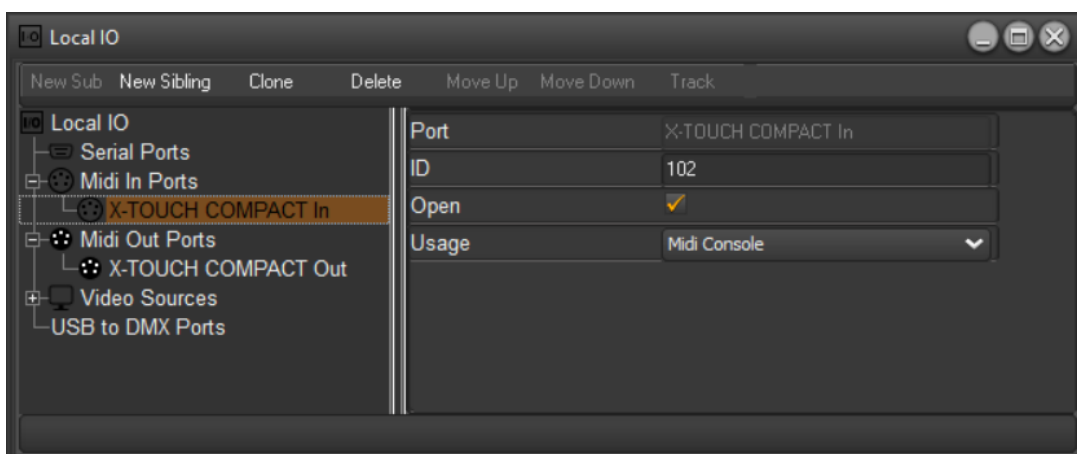


**You must now close this application before continuing, otherwise the communication with Prego will not be possible!!**

- Start Prego 2.3.11.0 or higher
- Go to Menu / Setup / **Local IO**

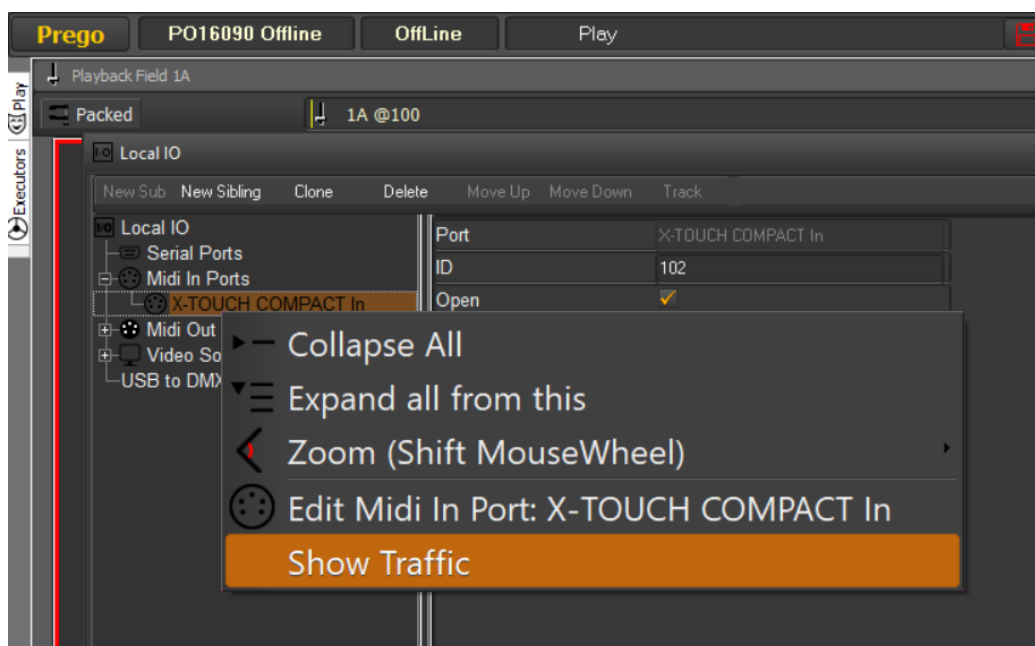


- The X-Touch will now appear in MIDI IN. Click below :



- Enter 102 in the ID field
- Check Open and choose MIDI Console from the list below
- Do the same for MIDI Out

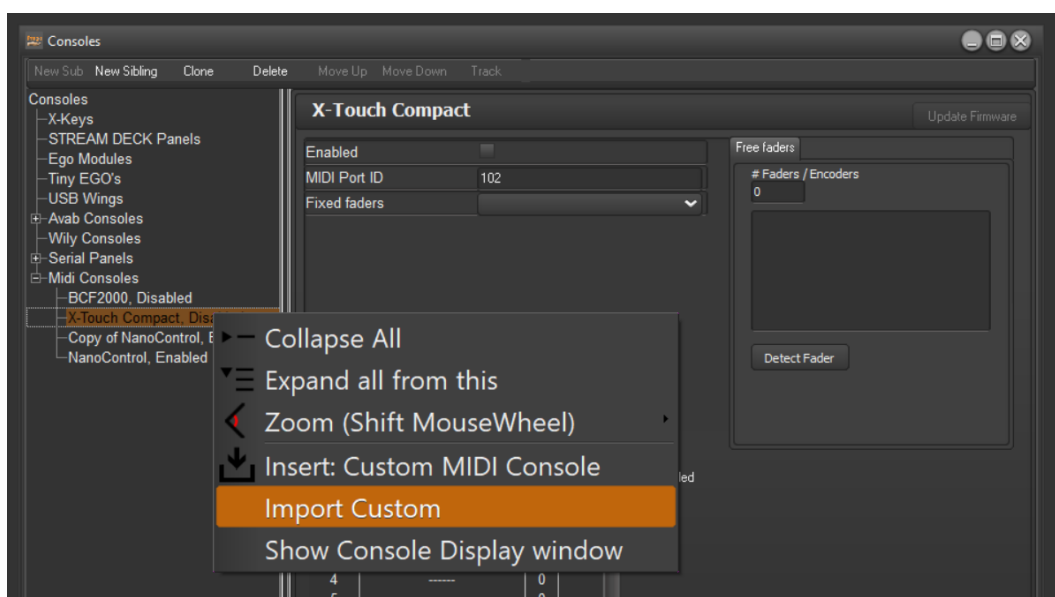
- During your tests if you want to check incoming or outgoing MIDI data, you can view traffic:



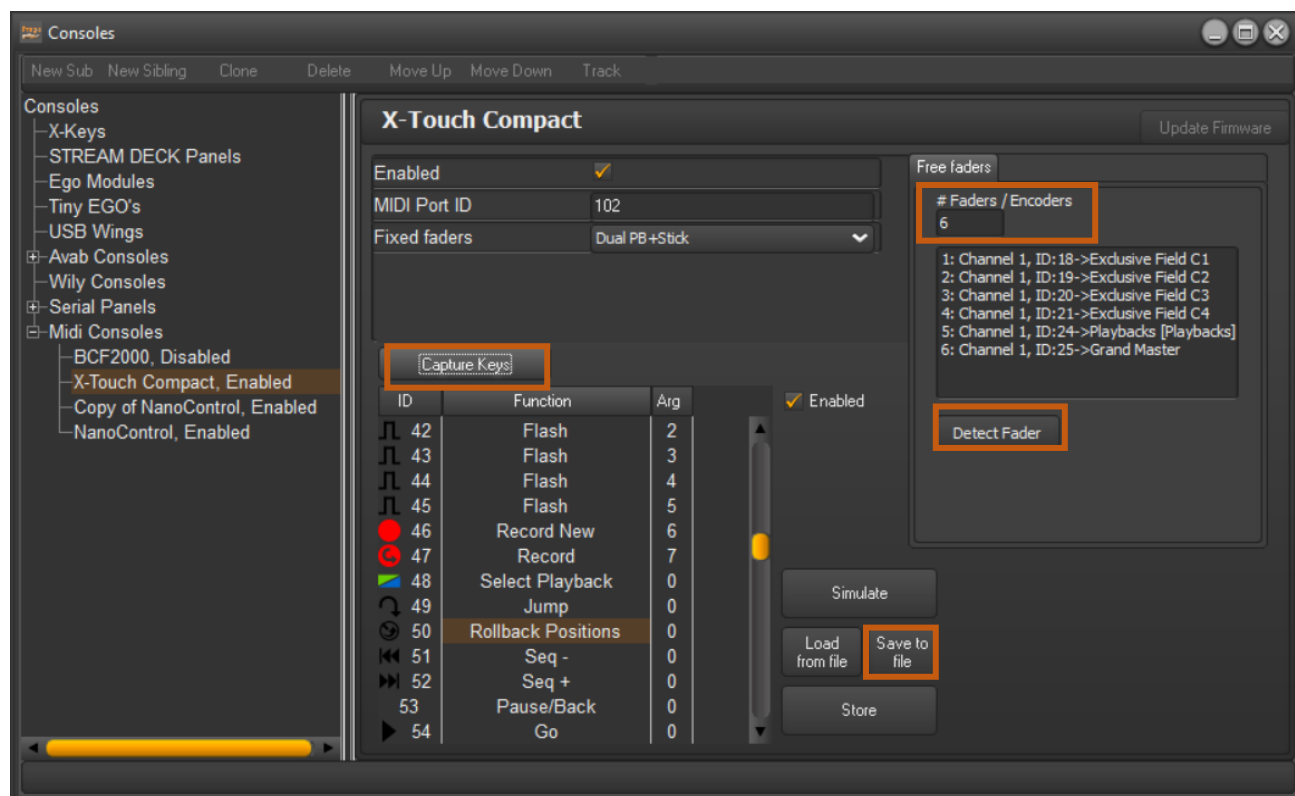
- Go to menu Prego / Setup / Consoles

**Only if X-touch Compact is not present in the MIDI Console list**

- In MIDI Consoles, right click on X-Touch Compact then **Import Custom**.



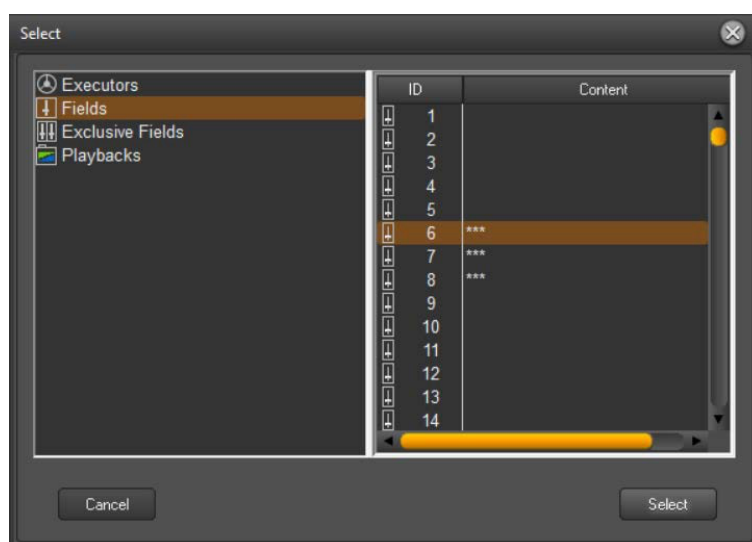
Browse to the folder containing the **X-Touch Compact.ini** file and open it.



You can of course then adapt the functions to the buttons as you please, going through **Capture Keys**, and assign another function.

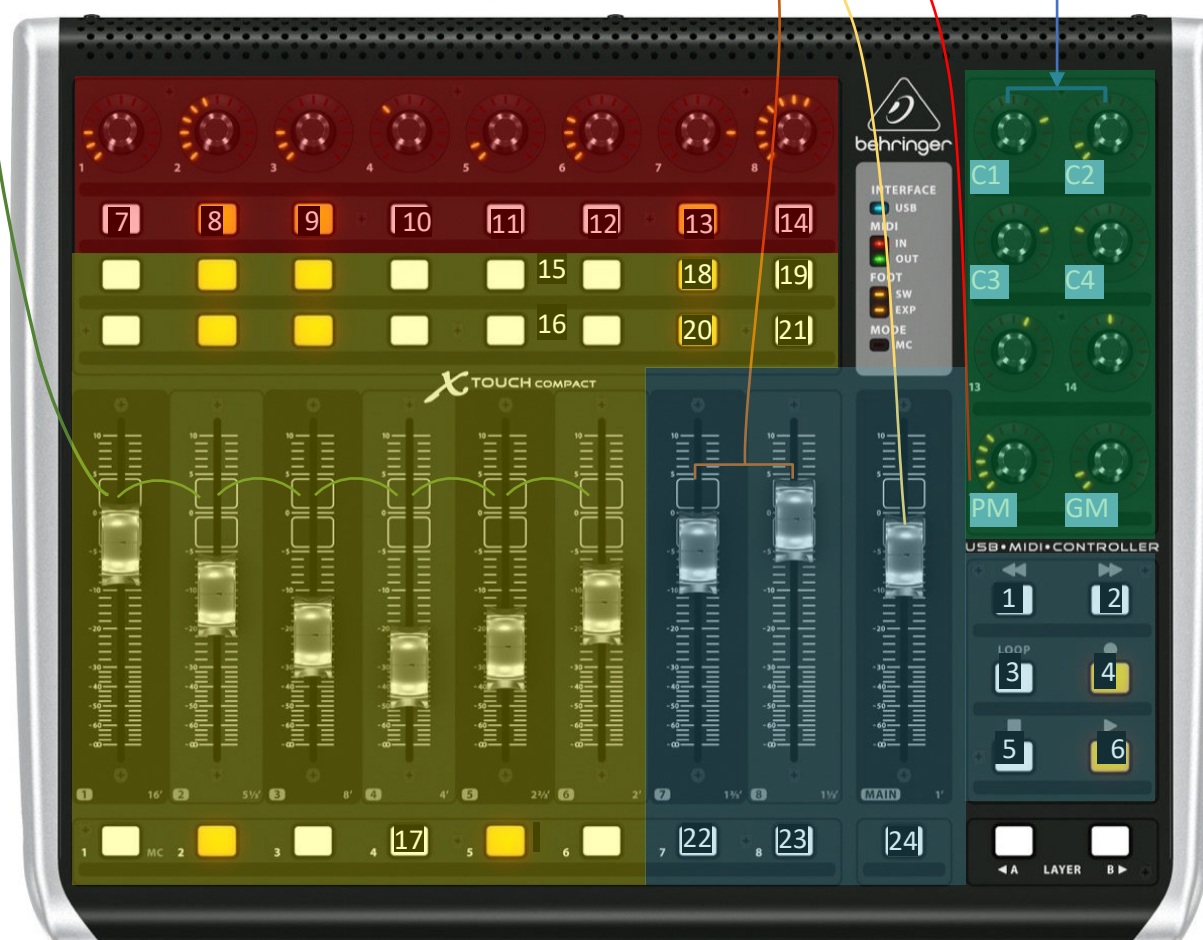
You can change/add the functions of faders /encoders via the **Detect Fader** key

Just change the amount of Free Faders in the field **#Faders / Encoders**, then select one of the lines created below, move the fader / encoder, finally assign it a function by double clicking on the line concerned.



This configuration affects:

- The faders from 1 to 6 at fields 1 to 6 in Bank 1
- les 2 faders 7 et 8 au Crossfade du Playback 1.
- The fader 9 at Intensity / Speed Control
- the first 4 encoders from top right to Exclusive Fields C1 and C2
- The last 2 encoders at the PlaybackMaster & Grand Master



#### The keys Command

1. JUMP
2. ROLLBACK
3. SEQ -
4. SEQ +
5. PAUSE/BACK
6. GO
22. REC NEW
23. REC
24. SELECT PLAYBACK

#### Banks Settings

- Clickable encoders
7. FOCUS
  8. COLOR
  9. BEAM
  10. PATTERN
  11. EXTRA
  12. DYNAMIC
  13. ALL
  14. COPY ATT

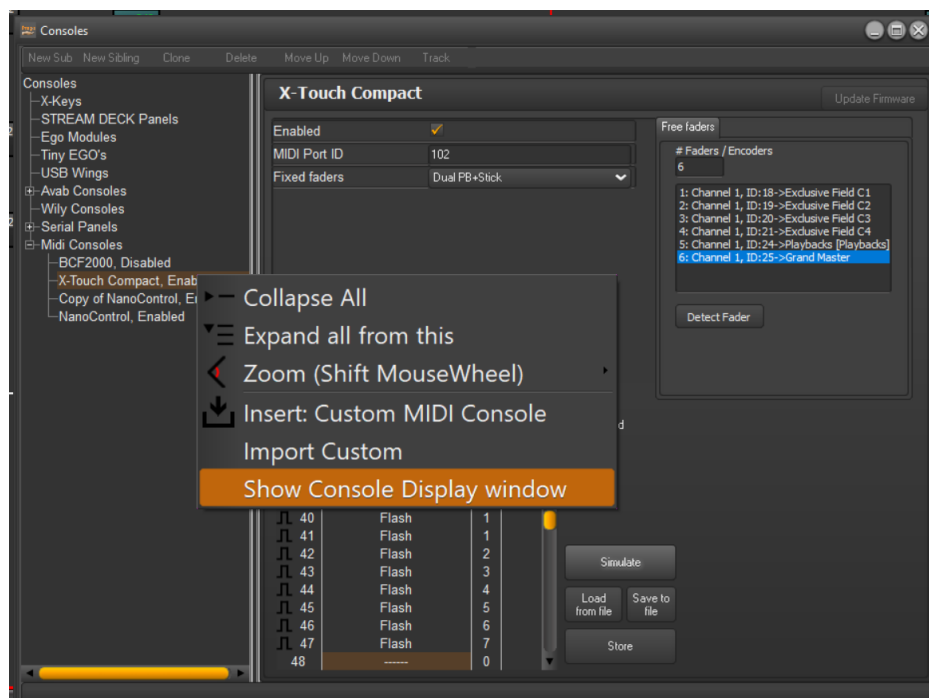
#### The keys Faders

15. ASSIGN
16. START
17. FLASH
18. FADER BANK -
19. FADER BANK +
20. RATE
21. LOAD

Once you've finished your setup, consider clicking On **Store** to keep these changes on the next restart.

If you need to export this configuration to other PCs click the **Save to File** button, to save it to your hard drive or a USB stick.

Finally, it is imperative to open the control window dedicated to this console by making a right click on the console concerned on the left.



What opens this window:



Dock it in a sub-screen of your choice.

The settings displays correspond to the settings of the encoders from 1 to 8 at the top, dynamically allocated according to the current selection.