

AVAB PRESTO (MIDI) CONSOLE INSTALLATION GUIDE



- Once downloaded, unzip the folder.
- You'll find all the files you need to install/set up the AVAB Presto consoles as a MIDI controller.
- Put the file "presto.s1" on a diskette.

BEFORE PROCEED PLEASE BE SHURE TO HAVE A BACKUP OF THE PRESTO SOFTWARE VERSION

- Follow these instructions (available in PRESTO user manual p157) :

Loading a new software version

1. Switch off the Presto.
2. Press and hold the [GO], [PAUSE], and [GO_BACK] keys while turning on the console.
3. Insert the floppy disk containing the new software version (presto.s1) into the floppy disk drive.
4. Press [GO] to start loading the new software.
5. Make sure to follow the instructions displayed on the screen exactly.

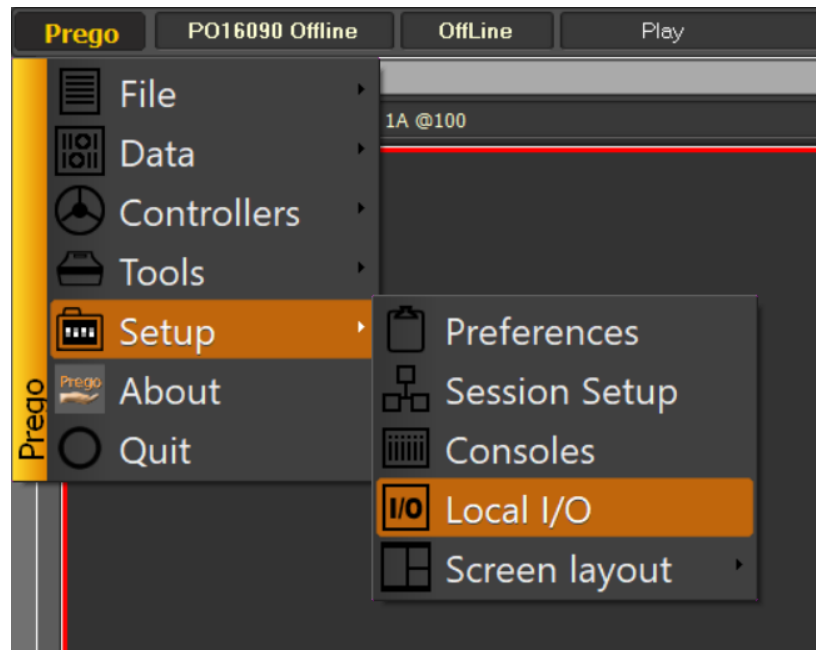
First, the system checks the installation files. Then, the old version of the software is erased, and the new version is installed. The installation takes around 5 minutes.

Warning: Make sure the floppy disk is not pulled out of the drive during installation, as this will render the Presto unable to function.

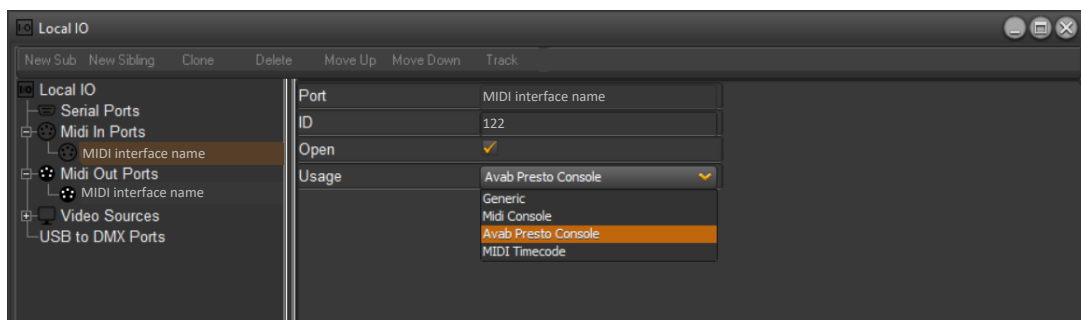
After the procedure is complete, the PRESTO console is ready to work as a MIDI controller.

- Connect and install your USB MIDI interface. Follow the owners installing instruction.
- **Connect the Presto console MIDI port to the USB MIDI interface using MIDI 5pin DIN wires (IN & OUT must be connected)**

- Start Prego 2.3.11.0 or higher
- Go to PREGO / Setup / **Local IO**

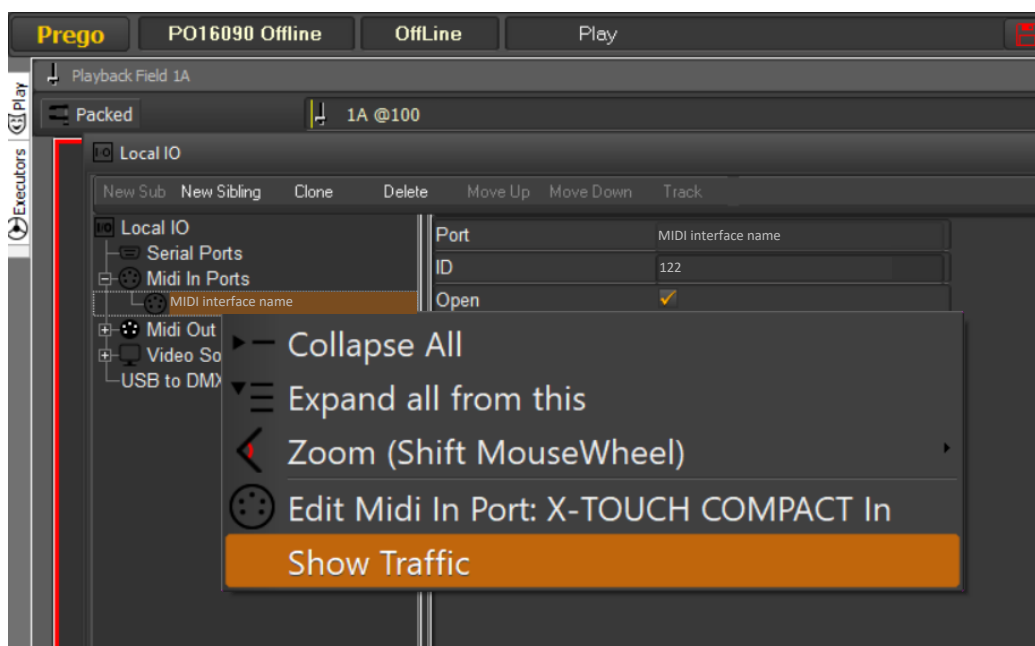


- The MIDI interface (with it's name) will now appear in MIDI IN. Click below :

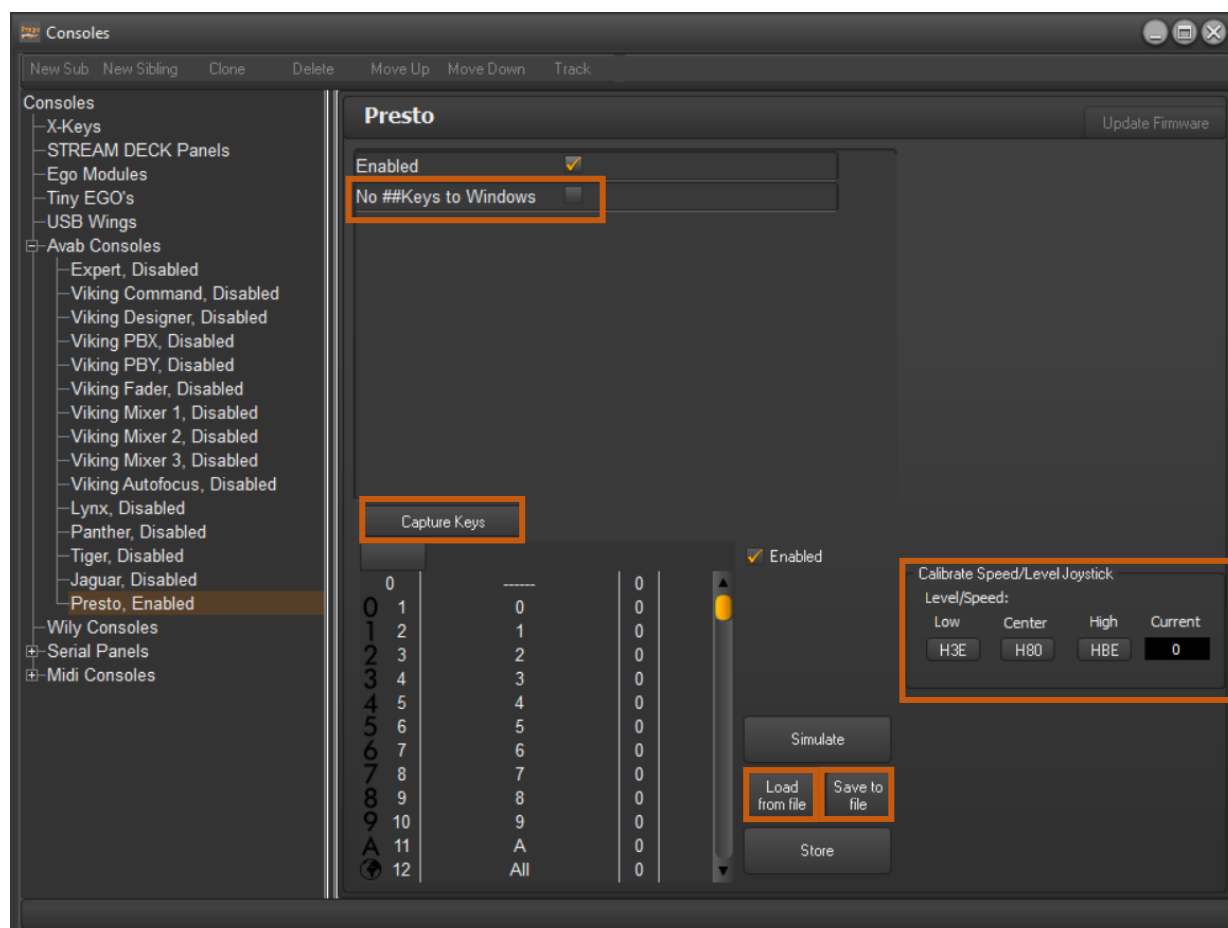


- Enter 122 in the ID field
- Check Open and choose Avab Presto Console from the list below
- Do the same for MIDI Out

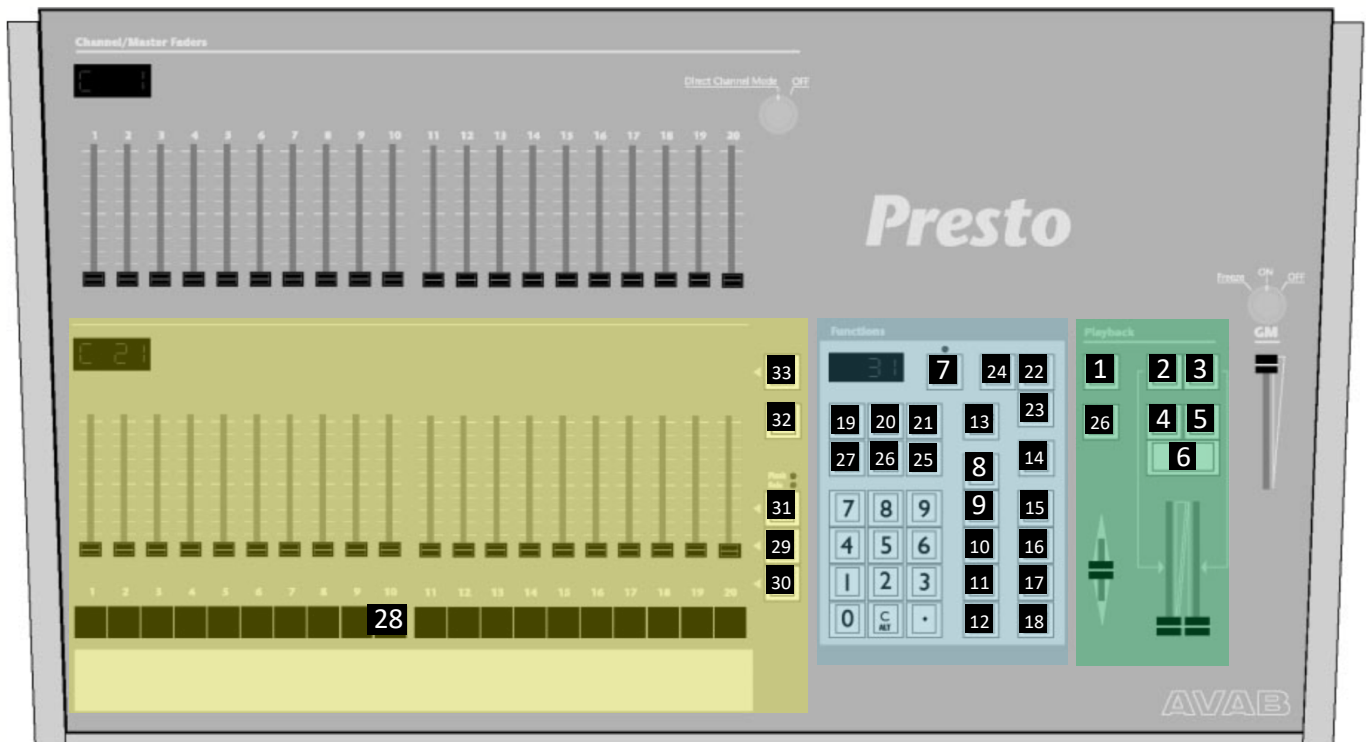
- During your tests if you want to check incoming or outgoing MIDI data, you can view traffic:



- Go to menu Prego / Setup / Consoles
- In AVAB Consoles, click on PRESTO



- Presse **Load from file button**, then browse to find “PrestoInitial.ini” present in the Presto package. The Presto key setup applied is the following :



The Playback keys

1. JUMP
2. A
3. B
4. PAUSE
5. GO BACK
6. GO
26. SEL. PLAYBACK

The command keys

7. REC NEW
8. THRU
9. CHANNEL
10. +
11. -
12. ALL
13. SCALE
14. TIME
15. @ level
16. +%
17. -%
18. FETCH
19. FaderBank -
20. FaderBank +
21. LOAD
22. ESC
23. REC
24. EDIT

The Faders keys

28. ASSIGN
29. START
30. PAGE
31. FLASH
32. RATE
33. CHASER

You can of course then adapt the functions to the buttons as you please, going through **Capture Keys**, and assign another function.

Once you've finished your setup, consider clicking On **Store** to keep these changes for the next restart.

If you need to export this configuration to other PCs click the **Save to File** button, to save it to your hard drive or a USB stick.

To **Calibrate** the speed/level joystick, hold a joystick position (low, center, high) and click on the belonging button to save the current value as reference.

If you don't want the Presto ##keys interact with Windows itself, tag the **No ##keys to Windows box**.