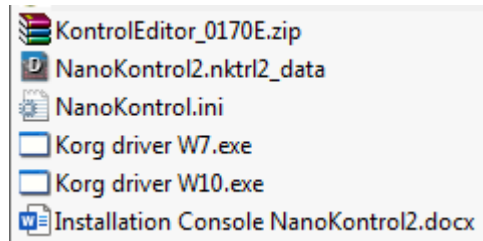
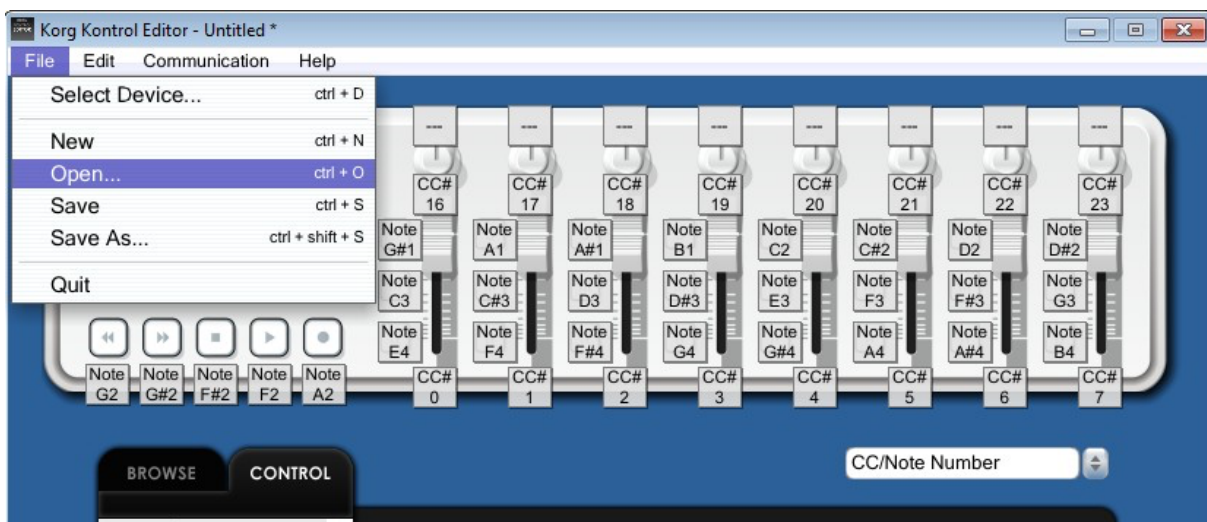


## MIDI KORG NANOCONTROL 2 CONTROLLER INSTALLATION GUIDE

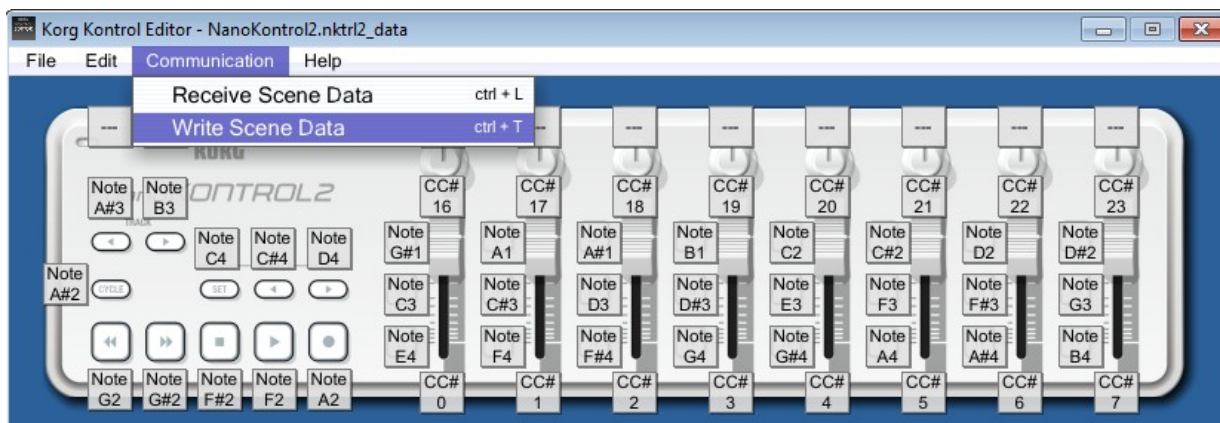
- Once downloaded, unzip the folder.
- You'll find all the files you need to install/setup Korg Nano Kontrol 2 consoles:



- Install drivers provided for Windows 7/8 or 10
- Install and launch publisher Korg KontrolEditor.exe

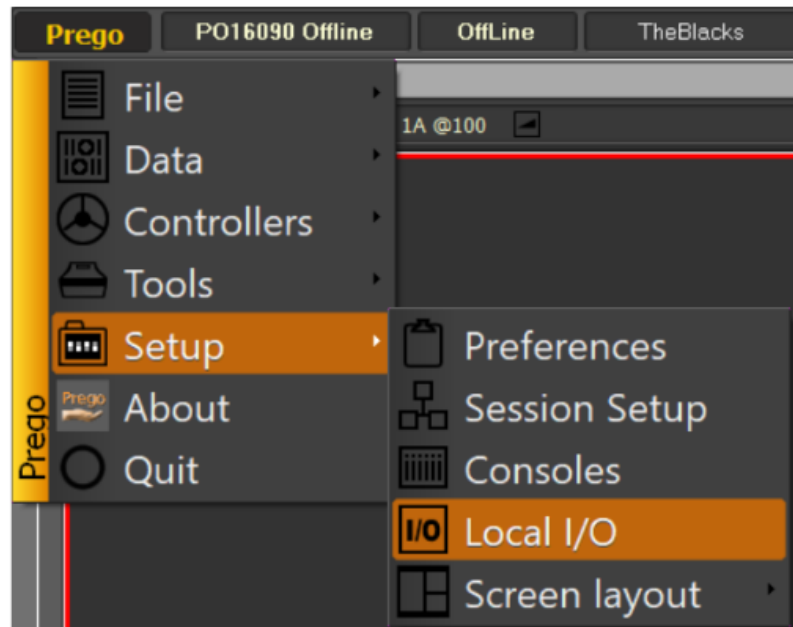


- File/Open then browse to the location where you unzipped the Korg files.
- Open the file NanoKontrol2.nktrl2\_data, which loads the layout into the program.
- Now send it to the console:

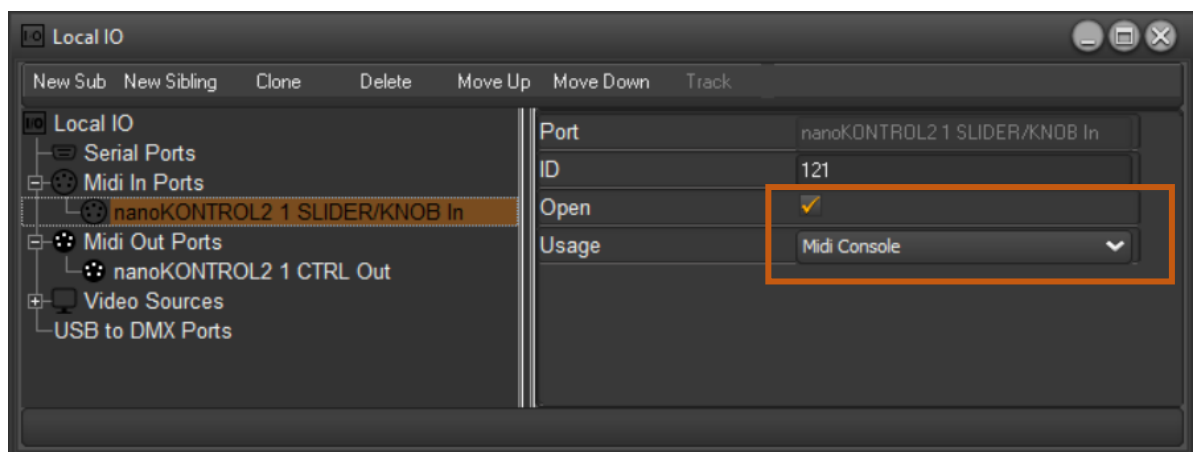


**You must now close this application before continuing, otherwise the communication with Prego will not be possible!!**

- Start Prego 2.3.11.0 or higher
- Go to Menu / Setup / **Local IO**

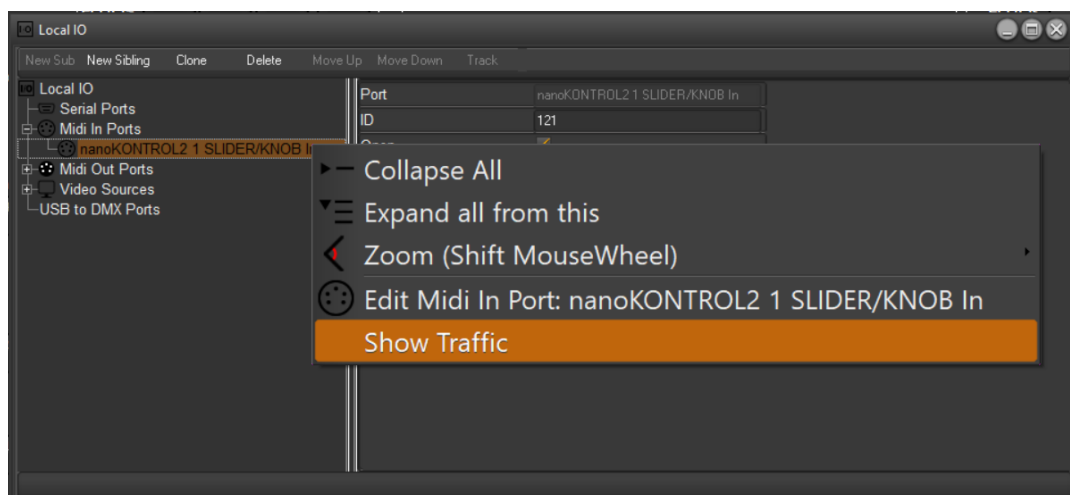


- NanoKontrol will now appear in MIDI IN. Click on it.



- Check Open and choose MIDI Console from the list below
- Do the same for MIDI Out

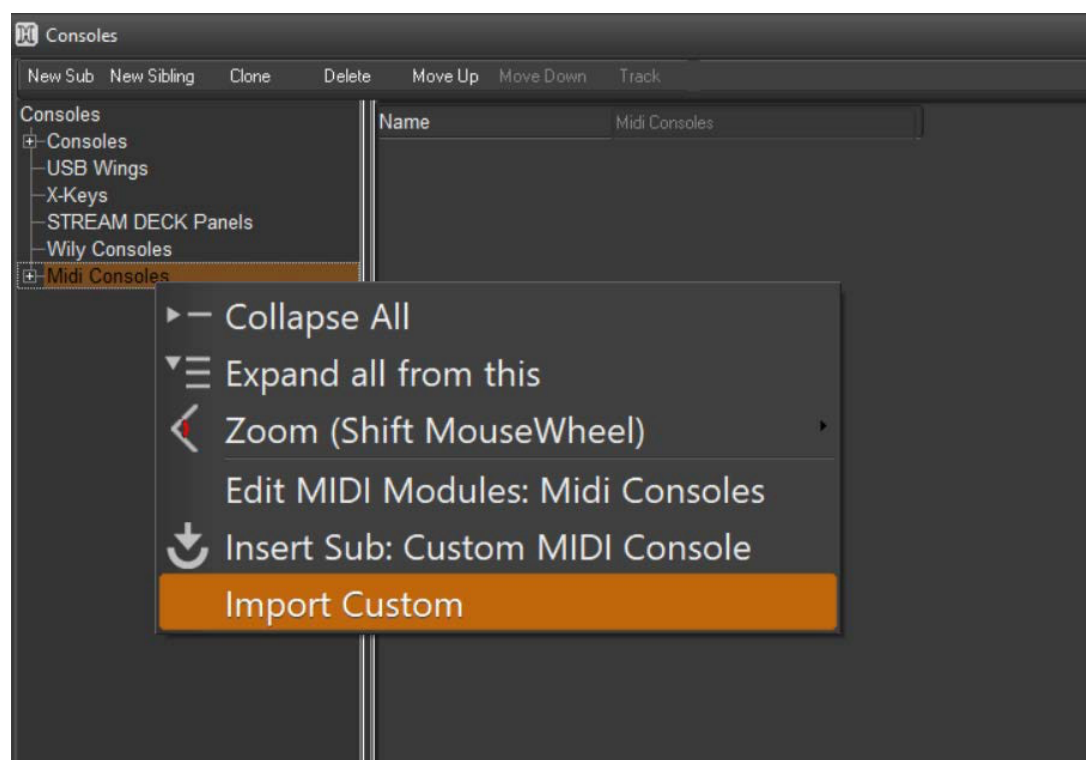
- During your tests if you want to check incoming or outgoing MIDI data, you can view traffic:



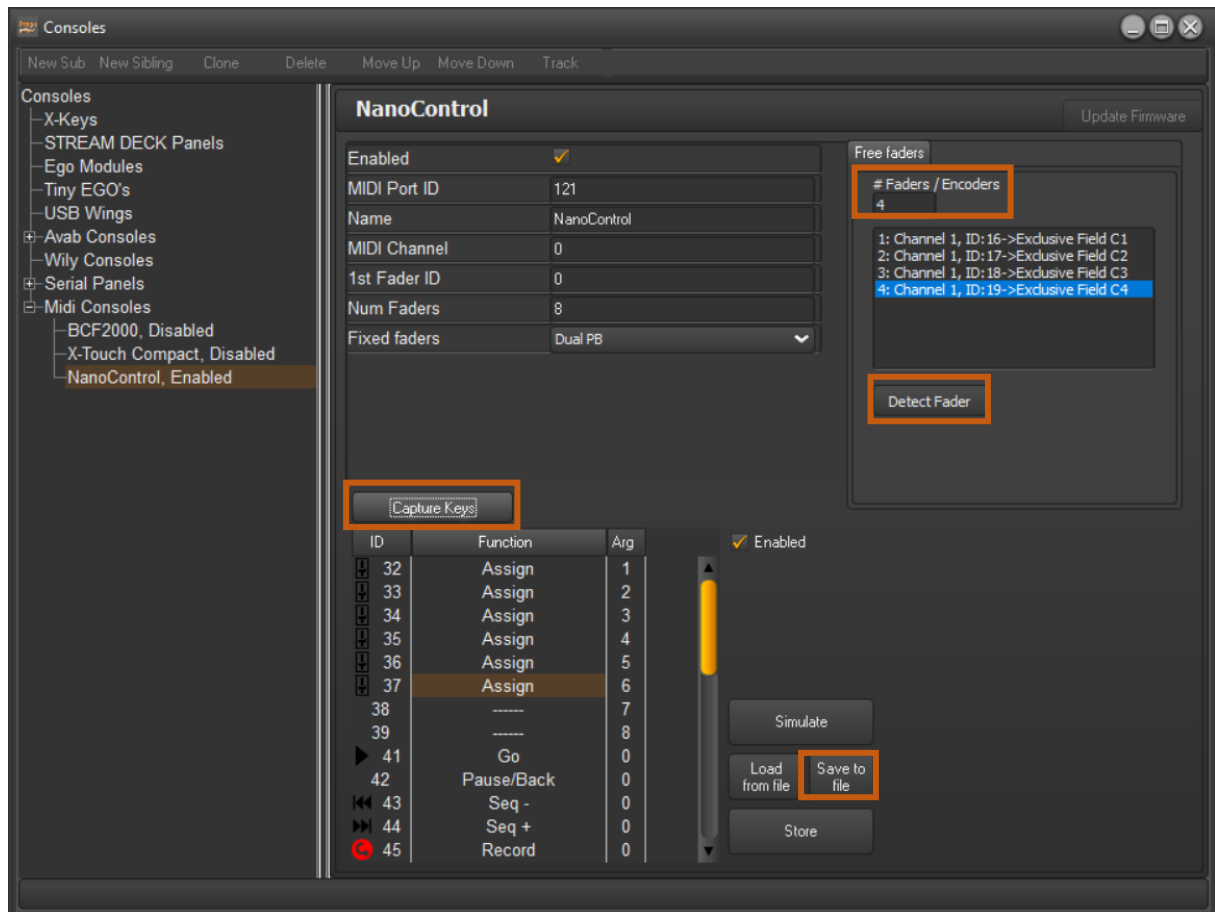
- Go to Menu Prego / Setup / Consoles

**Only if NanoKontrol is not present in the MIDI Console list**

- In MIDI Consoles, right click then **Import Custom**,



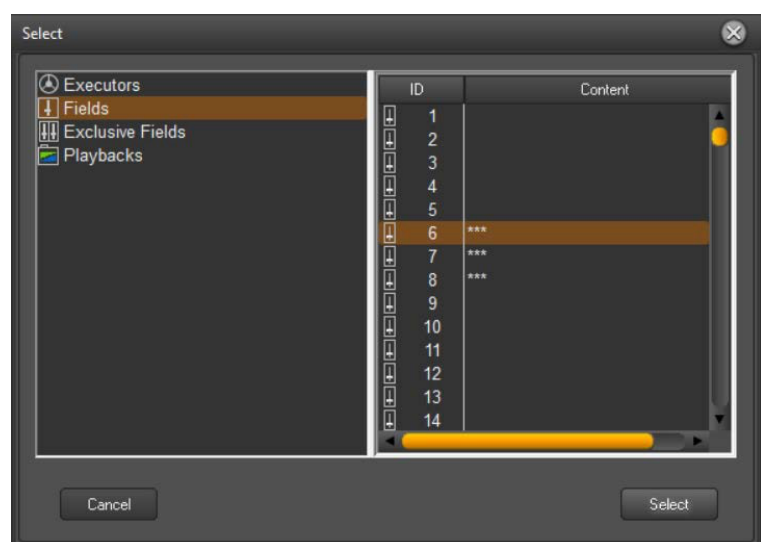
Browse to the folder containing the **NanoKontrol.ini** file and open it.



You can of course then adapt the functions to the buttons as you please, going through **Capture Keys**, and assigning another function.

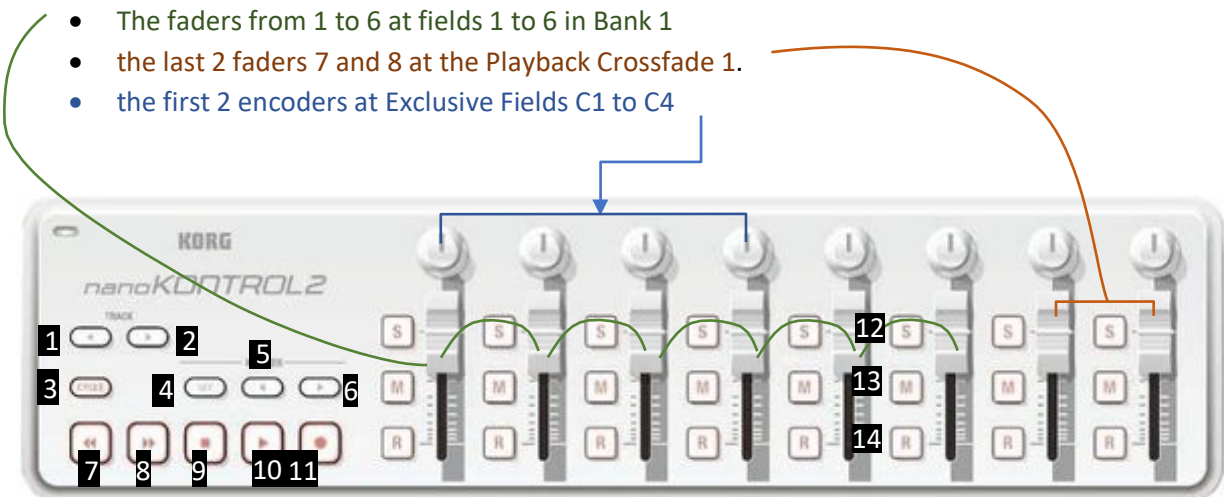
You can change/add the functions of faders /encoders via the **Detect Fader** key

Just change the amount of Free Faders in the field **#Faders / Encoders**, then select one of the lines created below, move the fader / encoder, finally assign it a function by double clicking on the line concerned.



This configuration affects:

- The faders from 1 to 6 at fields 1 to 6 in Bank 1
- the last 2 faders 7 and 8 at the Playback Crossfade 1.
- the first 2 encoders at Exclusive Fields C1 to C4



The control keys Faders

1. FADER BANK +
2. FADER BANK -
3. ALL
4. C/ALT
5. -%
6. +%
7. SEQ-
8. SEQ+
9. PAUSE/BACK
10. GO
11. RECORD

keys

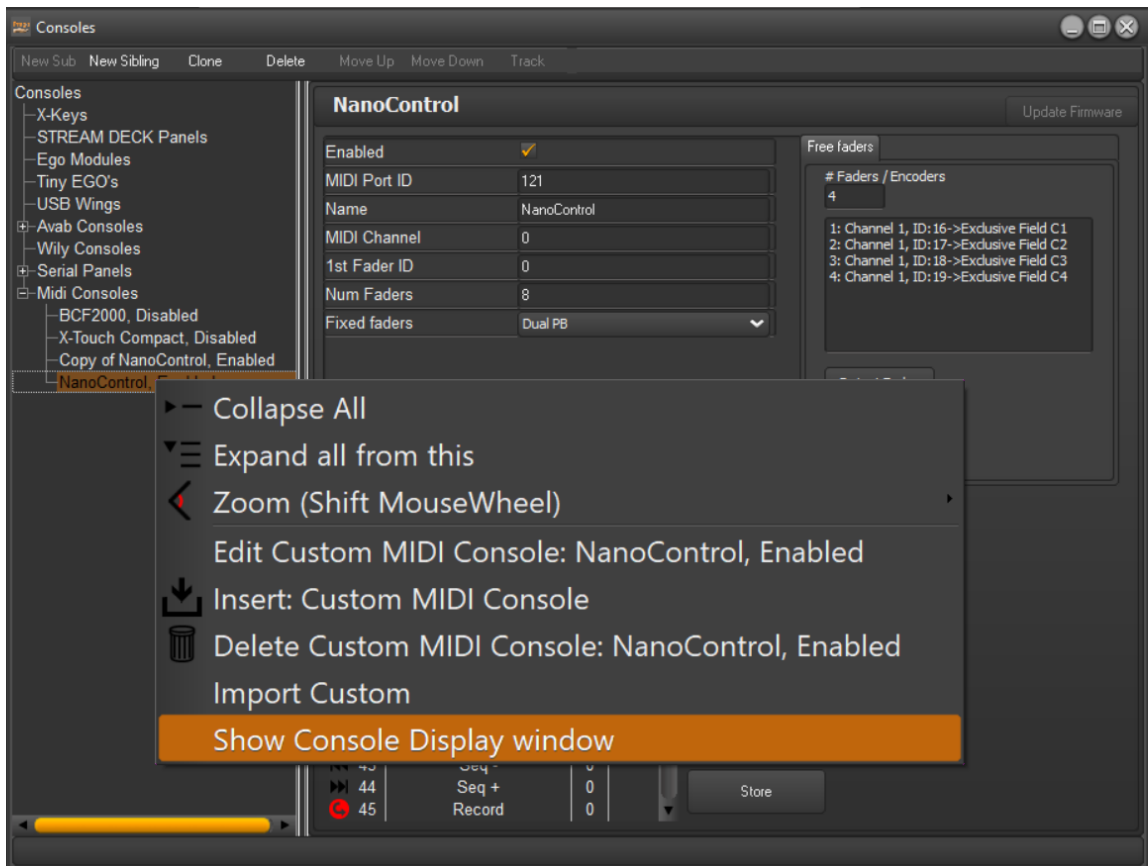
12. ASSIGN
13. START
14. FLASH

Once you've finished your setup, consider clicking On Store to keep these changes on the next restart.

If you need to export this configuration to other PCs click the **Save to File** button, to save it to your hard drive or a USB stick.

Finally, it is imperative to open the control window dedicated to this console by making a right click on the console concerned on the left, **if you have assigned a crossfade as here.**

This opens this window:



Dock it in a sub-screen of your choice.

